

想你所想的 做你想要的
THINK WHAT YOU THINK DO WHAT YOU WANT



扫一扫 更精彩

宁波金戈智能装备有限公司
NINGBOKINGGLESMTMACHINERYCO.,LTD
浙江省宁波市余姚河姆渡镇寺慈线6号
WEB: www.kinggle.com EMAIL: Sales@kinggle.cc
全国服务热线: 400-089-9988

KING
GLE

让吹塑生产更轻松
Let the blow molding production more relax

2024年产品目录

KINGGLE®
金戈智能装备
KINGGLE SMART MACHINERY

让吹塑生产更轻松!
Let the blow molding production more relax!

KINGLE
金戈智能装备
KINGGLE SMART MACHINERY

COMPANY PROFILE

企业简介

宁波金戈智能装备有限公司是一家提供吹塑机全自动生产整合方案的现代化公司。公司拥有一批优秀的技术人才，在塑机行业中有着二十多年的实践经验。公司针对吹塑工厂的整体生产规划,自动化供料、破碎、供气、供水,提供一站式服务型公司,提供吹塑生产的后续切割、修边、为无人化生产提供有力的技术保障,同时提供吹塑生产所需要的人才培训、人才招聘、生产优化建议等高价值的深度服务,体现了一家企业使命“让吹塑生产更轻松!”核心价值。

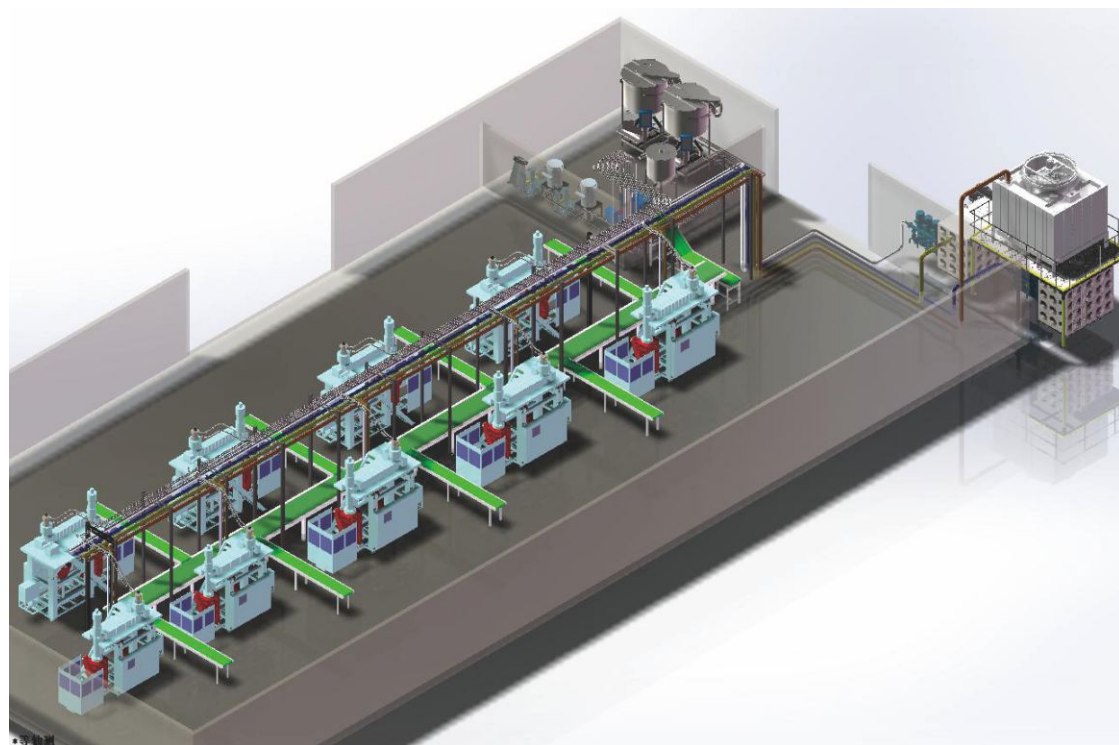
Ningbo Kinggle Smart Machinery Co.,Ltd. is a modern company providing full-automatic production integration scheme of blow molding machine. The company has a group of excellent technical talents and has more than 20 years of practical experience in the plastic machine industry. Aiming at the overall production planning of blow molding plant, the company provides a one-stop service company for automatic material supply, crushing, gas supply and water supply, provides follow-up cutting and trimming of blow molding production, provides strong technical support for unmanned production, and provides high-value in-depth services such as talent training, talent recruitment and production optimization suggestions required by blow molding production, It embodies the core value of an enterprise mission "making blow molding production easier!".



WHOLE PLANT SYSTEM SOLUTION └ 整厂系统解决方案

吹塑生产整厂系统解决方案：主要由中央供料系统、集中供水系统、集中破碎系统组成；完美解决吹塑生产过程中现场混乱、效率低、能耗高、故障率高等普遍现象；整厂系统解决方案是提高生产核心竞争力的最佳方案。

Blow molding production whole plant system solution: mainly composed of central feeding system, centralized water supply system, and centralized crushing system; Perfectly solving the common problems of on-site chaos, low efficiency, high energy consumption, and high failure rate in blow molding production process; The whole factory system solution is the best solution to improve the core competitiveness of production.



BLOW MOLDING AUTOMATION SYSTEM └ 吹塑自动化系统

吹塑自动化系统主要针对吹塑制品生产到合格成品这个过程处理，主要包含吹塑制品废边处理、合模线后处理、切割处理、成品检测、产品定型等系列后道处理问题；主要目的是提高吹塑生产效率，提高产品一致性，形成后道处理标准化，是吹塑生产到合格成品一整套自动化解决方案。

The blow molding automation system is mainly aimed at the process of producing blow molded products to qualified finished products, which mainly includes a series of post-processing problems such as blow molded product waste edge treatment, mold line post-treatment, cutting treatment, finished product inspection, product shaping, etc; The main purpose is to improve the production efficiency of blow molding, enhance product consistency, and form a standardized post-processing system, which is a complete automation solution from blow molding production to qualified finished products.

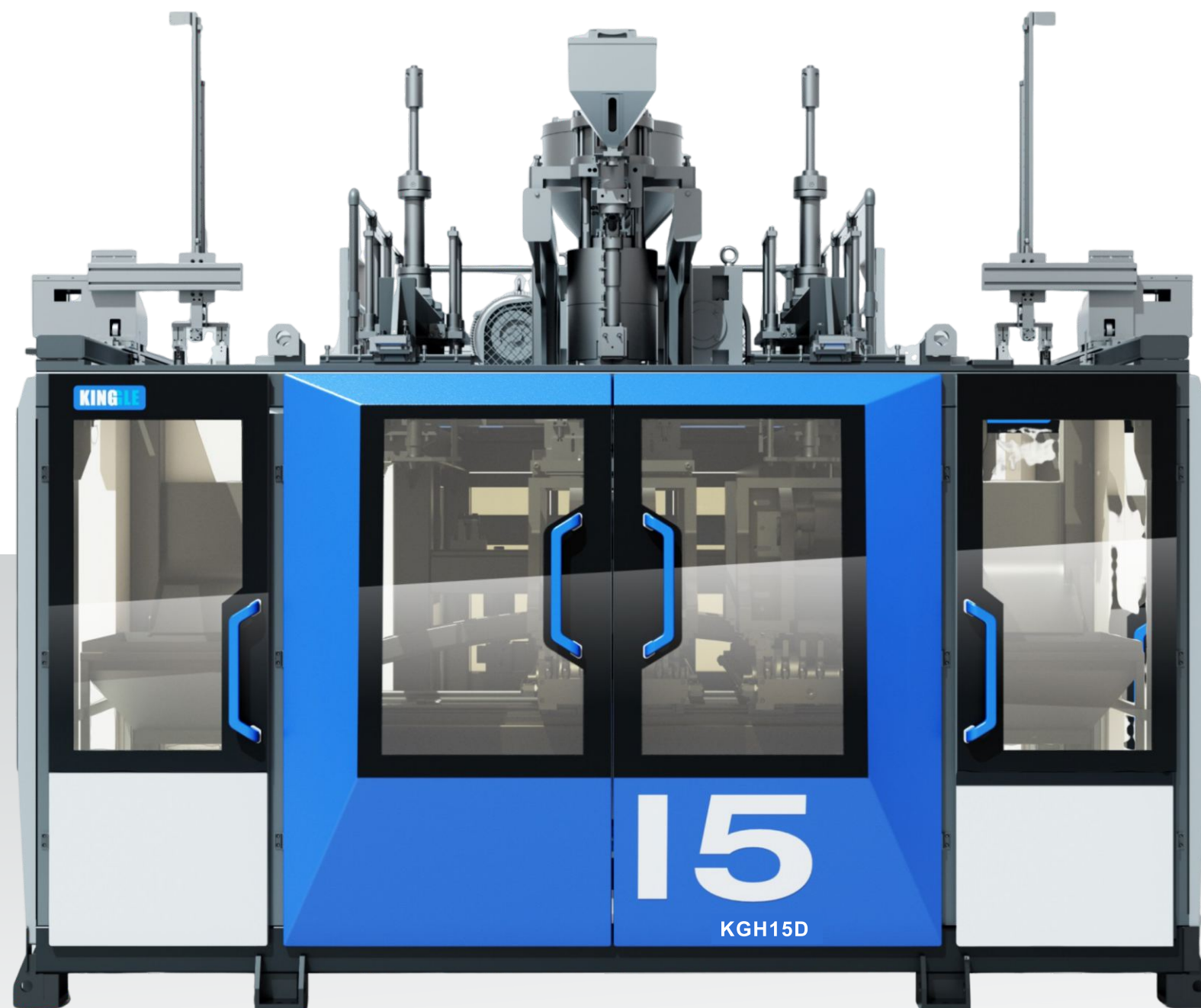


(5L-30L)KGH系列 全自动高速吹塑机

(5L-30L) KGH SERIES Fully Automatic High-speed Blow Molding Machine

KGH系列为金戈智能开发的全自动高速曲臂吹塑机，主要针对5L-30L容器类制品的生产，可以实现1-6层不同类别产品需求，达到高速全自动化、无人化作业。

The KGH series is a fully automatic high-speed curved arm blow molding machine developed by Jingo Intelligence, mainly targeting 5L-30L container products. It can meet the requirements of 1-6 layers of different product categories, achieving high-speed, fully automated, and unmanned operation.



三菱PLC (日本)



WEINVIEW
10.4英寸Weinview (台湾)

OMRON

欧姆龙 (日本)

Schneider
Electric

施耐德 (法国)

ETD

ETD(美国)

GEFRAN

GEFRAN(意大利)

MOOG

MOOG(日本)

AirTAC

Airtac(台湾)

INOVANCE

Inovance(中国)

...



(20L-120L)KGH系列 储料式高速吹塑机

(20L-120L) KGH SERIES Storage Type High-speed Blow Molding Machine

KGH系列主要特点为高速射出、高速合模、超大锁模力为主要特点的高速吹塑装备，是提高生产效率、实现后道自动化作业的高端机型。

The main characteristics of the KGH series are high-speed injection, high-speed mold closing, and ultra large mold locking force, which are high-end blow molding equipment that improves production efficiency and achieves automated operation in the later stage.



MITSUBISHI
三菱PLC (日本)



WEINVIEW
10.4英寸Weinview (台湾)

OMRON

欧姆龙 (日本)



施耐德 (法国)



ETD (美国)

GEFRAN

GEFRAN (意大利)

MOOG

MOOG (日本)

AIRTAC

Airtac (台湾)

INOVANCE

Inovance (中国)

...

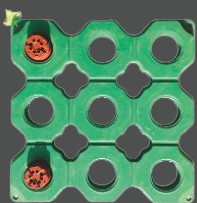
(10L-2000L)KGB、KGS系列 储料式吹塑机

(10L-2000L) KGB、KGS SERIES Storage Type Blow Molding Machine

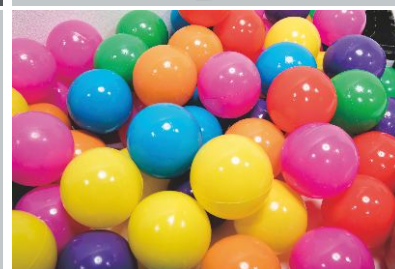
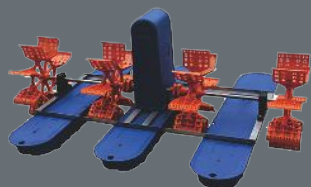
KGB系列为生产30年的传统机型，广受用户好评，也是市场主力机型；KGS系列是针对大型吹塑制品所要求的高速合模、超大锁模力、差异化需求的大型储料吹塑机。

The KGB series is a traditional model produced for 30 years, widely praised by users, and is also the main model in the market; The KGS series is a large-scale storage blow molding machine that meets the requirements of high-speed mold closing, super large locking force, and differentiated requirements for large blow molding products.

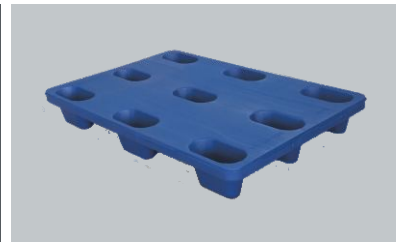
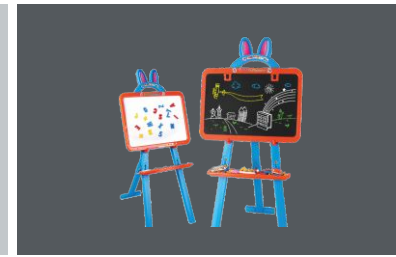




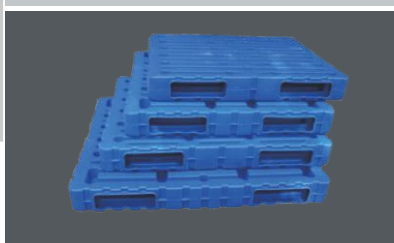
让吹塑生产更轻松!
Let the blow molding production more relax!



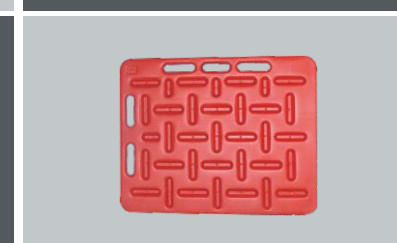
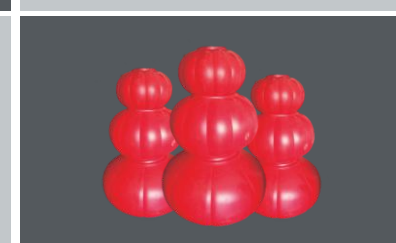
玩具
TOYS



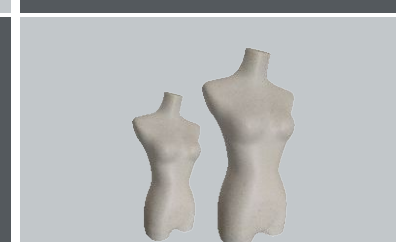
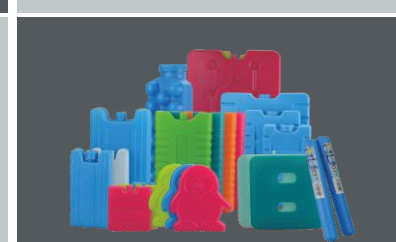
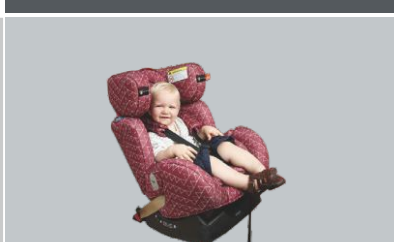
物流
LOGISTICS



医疗
MEDICAL CARE



婴童
INFANT



园林
GARDENS

桌椅
TABLES AND CHAIRS

其他
OTHERS